



NASA Partnerships & Technology Transfer

Art Maples

NASA Space Technology Mission Directorate





Partnerships



- NASA regularly engages in a wide range of activities with a multitude of external entities; in a broad sense, all of these activities can be considered “partnerships”
- A “Space Act Agreement” (SAA) is a specific type of partnership using NASA’s “other transactions” authority under the Space Act
- In addition to SAAs, there are various other external partnership instruments
- Partnership agreements such as SAAs are not procurement instruments; NASA does not procure goods or services for the benefit of the Agency through partnership agreements



With Whom Does NASA Partner?

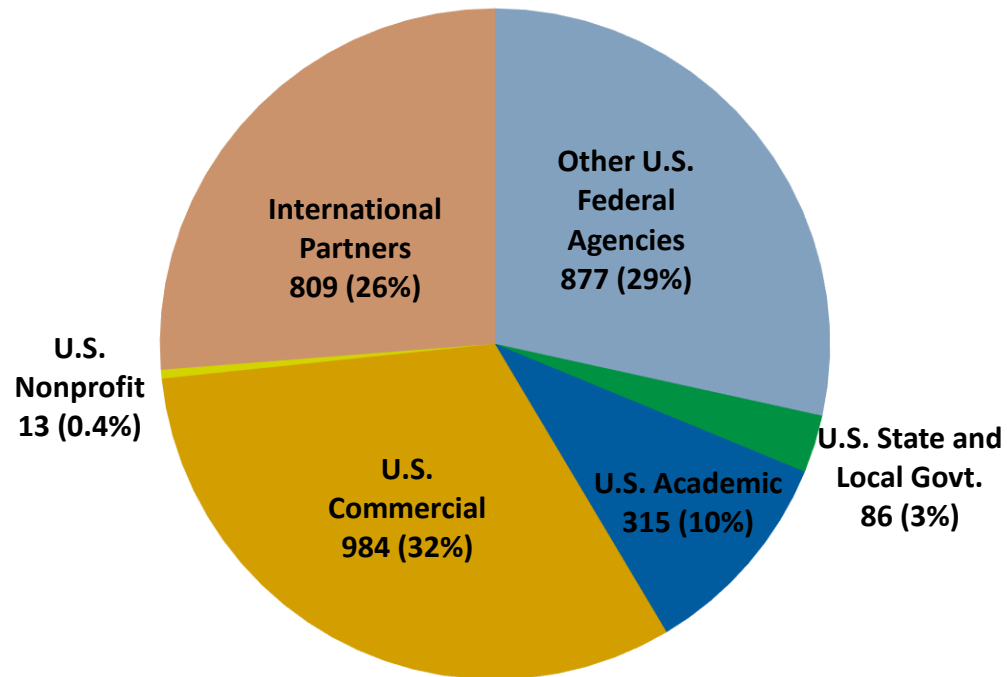
- U.S. industry
- Other U.S. Federal agencies
- Research institutions
- Public outreach organizations (e.g., museums)
- State and local governments
- Colleges and universities
- Foreign entities (businesses, academia, research institutions, governments)
- Professional associations and non-profits



NASA Partnerships Snapshot



Number of Active Agreements and % of Total by Partner Segment



U.S. commercial and Federal agency partners are NASA's largest partner segments, together accounting for nearly two-thirds of NASA's 3,084 active agreements.

Source: NASA Partnership Agreement Maker (PAM) system as of 1/28/2019 and NASA System for International and External Relations Agreements (SIERA) database as of 12/31/2018



Trends & Future Focus Areas



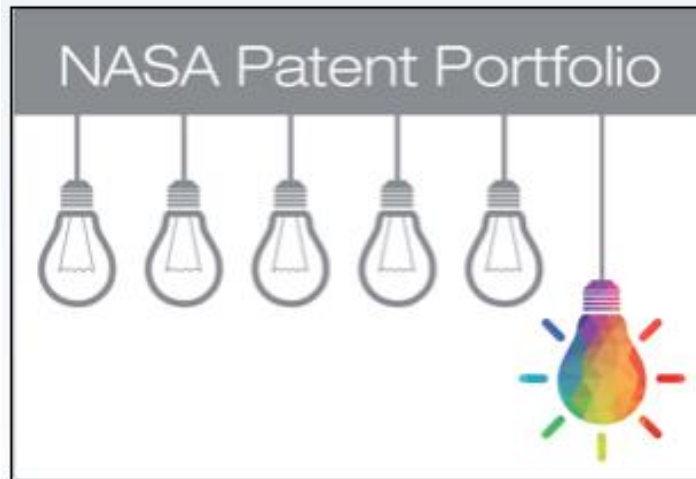
- The range of NASA partnership activities is increasingly diverse
- External partners and their capabilities are expanding; external partners continue to make breakthroughs in exploration technology and science in areas pertinent to NASA's missions
- Effective partnerships with all partner segments will be vital for successfully accomplishing NASA's "Boots on the Moon by 2024" mandate and future exploration initiatives to Mars and beyond!
- NASA Partnerships Portal <http://www.nasa.gov/partnerships.html>



Tech Transfer



- NASA's Technology Transfer Program ensures that innovations developed for exploration and discovery are broadly available to the public, maximizing the benefit to the Nation.



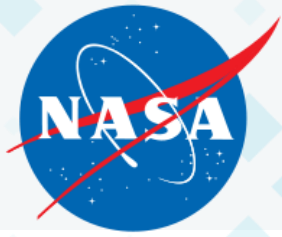
Patent Portfolio



Software Catalog



Success Stories



Tech Transfer



Licensing Technologies

- Nonexclusive agreements are the most commonly sought commercial licenses. Nonexclusive licenses can be granted to more than one company.
- An exclusive or partially exclusive commercial license gives a company exclusive or a limited exclusive access to NASA inventions. They require greater burdens on the part of the company, including higher royalties. Exclusivity may be limited to a specific market application, field of use, or geographic region, or to a fixed period of time (e.g., five years), after which the agreement converts to a nonexclusive license.
- An evaluation license allows your company to internally evaluate the inventions for a short period.

Startup NASA

- Startup companies are eligible for special licensing/royalty rates through our Startup NASA program. These include no up-front costs and no minimum fees for the first three years of the license.





Tech Transfer



technology.nasa.gov/patents

Patent Portfolio

The NASA patent portfolio is available to benefit US citizens. Through partnerships and licensing agreements with industry, these patents ensure that NASA investments in pioneering research find secondary uses that benefit the economy, create jobs, and improve quality of life. Click on each of the category icons for a list of patents in that category or use the search below to explore NASA's patent portfolio.

 Aeronautics	 Communications	 Electrical/ Electronics	 Environment	 Health, Medicine, and Biotechnology
 IT and Software	 Instrumentation	 Manufacturing	 Materials and Coatings	 Mechanical and Fluid Systems
 Optics	 Power Generation and Storage	 Propulsion	 Robotics, Automation and Control	 Sensors



Tech Transfer



software.nasa.gov



business systems and project management



system testing



operations



design and integration tools



vehicle management



data servers processing and handling



propulsion



structures and mechanisms



crew and life support



data and image processing



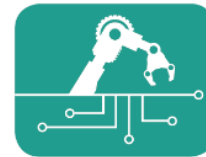
materials and processes



electronics and electrical power



environmental science



autonomous systems



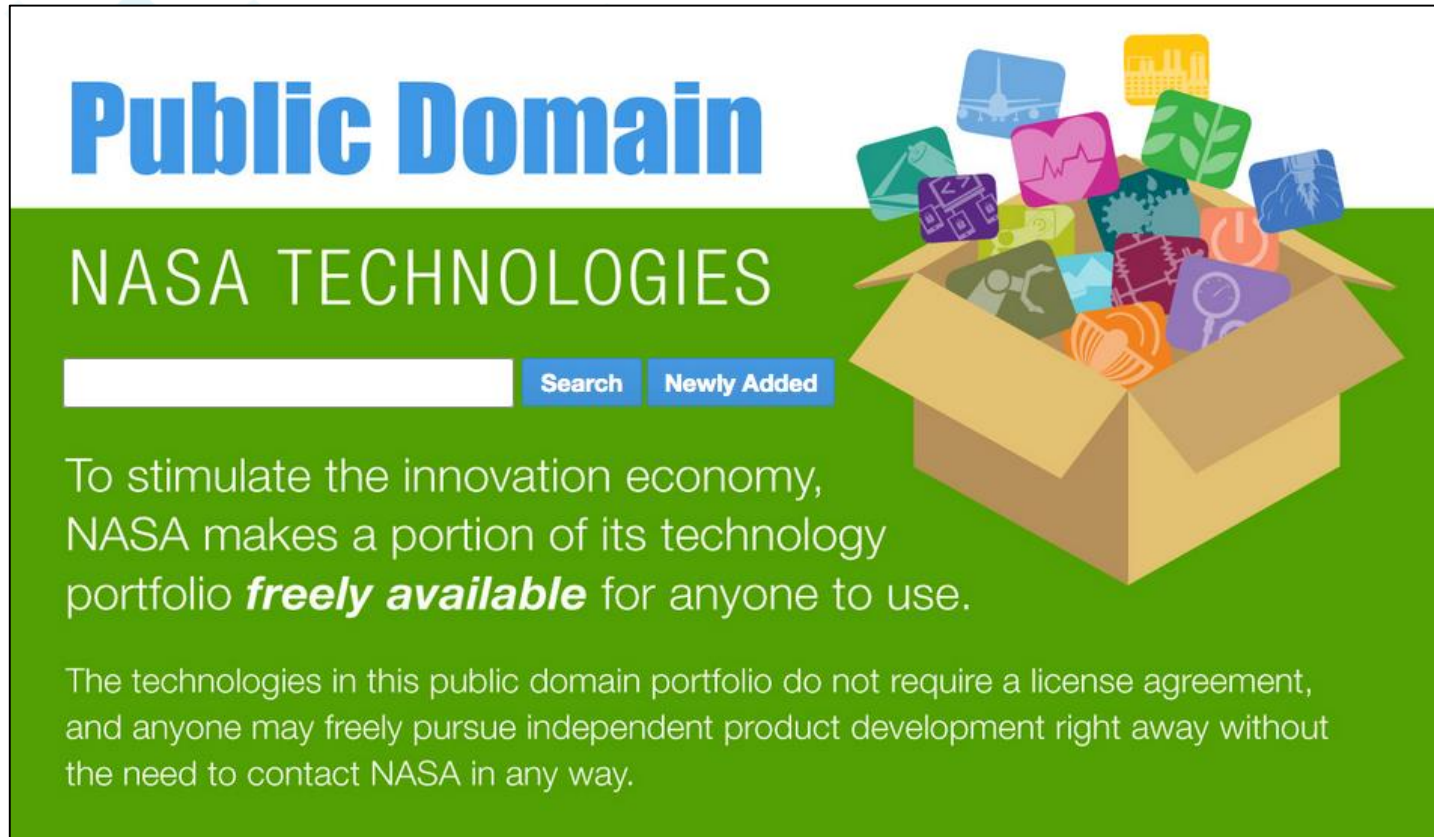
aeronautics



Tech Transfer



technology.nasa.gov/publicdomain




Public Domain

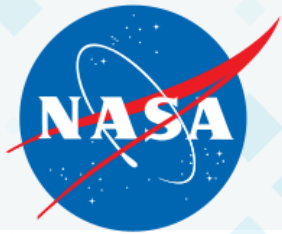
NASA TECHNOLOGIES

[Search](#) [Newly Added](#)

To stimulate the innovation economy, NASA makes a portion of its technology portfolio **freely available** for anyone to use.

The technologies in this public domain portfolio do not require a license agreement, and anyone may freely pursue independent product development right away without the need to contact NASA in any way.

An illustration of an open cardboard box overflowing with various colorful icons representing different technological fields such as space exploration, medicine, agriculture, and engineering.



For more info.



Visit the Tech Transfer Table
Meet with the Program
Reps

Sean Sullivan
Mikaela McShane
Walt Ugalde

Art.Maples@nasa.gov